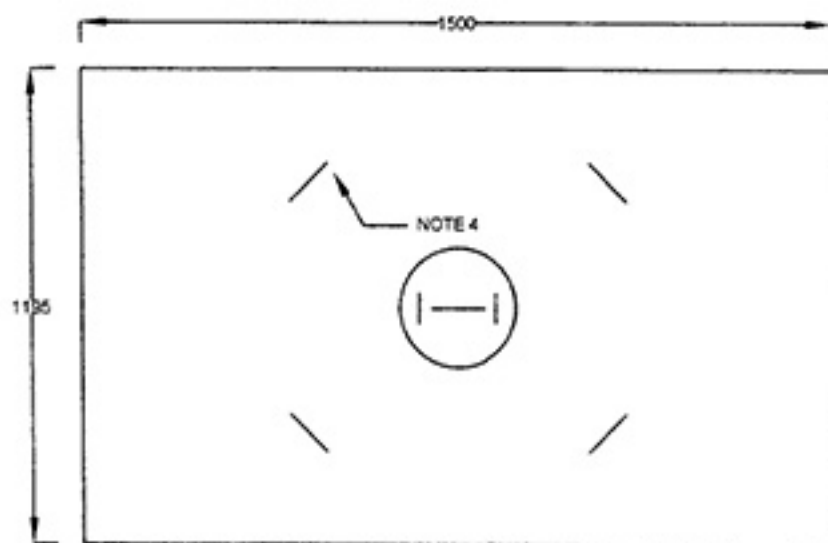
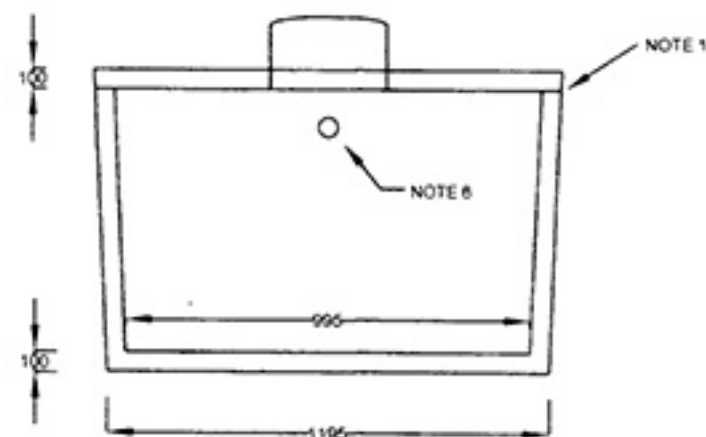
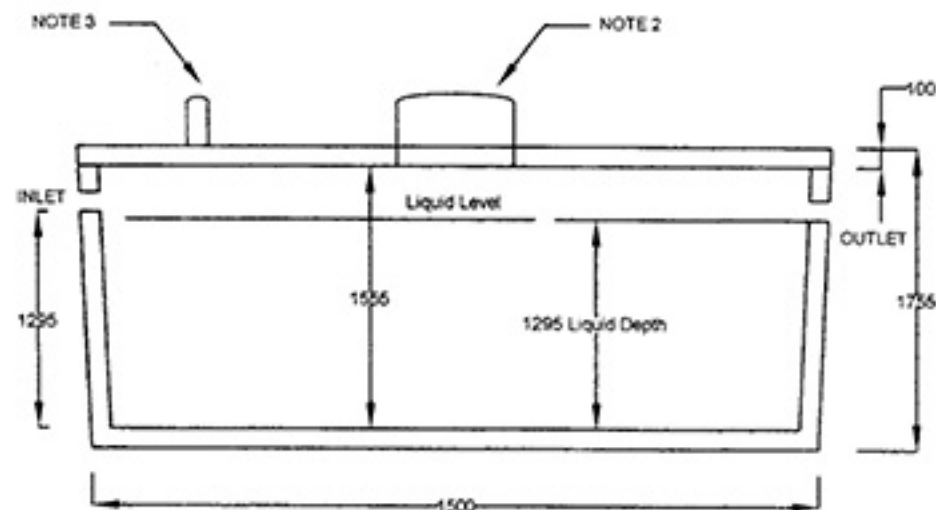




ORANGEVILLE  
PRE-CAST  
CONCRETE LTD.

PRECAST HOLDING TANK  
MODEL #: 400ST 1, 800 LITRE - 2, 000 KG  
MAXIMUM DEPTH OF BURIAL IS 1m

R.R. #4, ORANGEVILLE, ONTARIO L9W 2Z1 (519)941-4050 Fax: (519)941-8028



All measurements in mm

Notes: Notes:

Working Capacity 1800 Litres

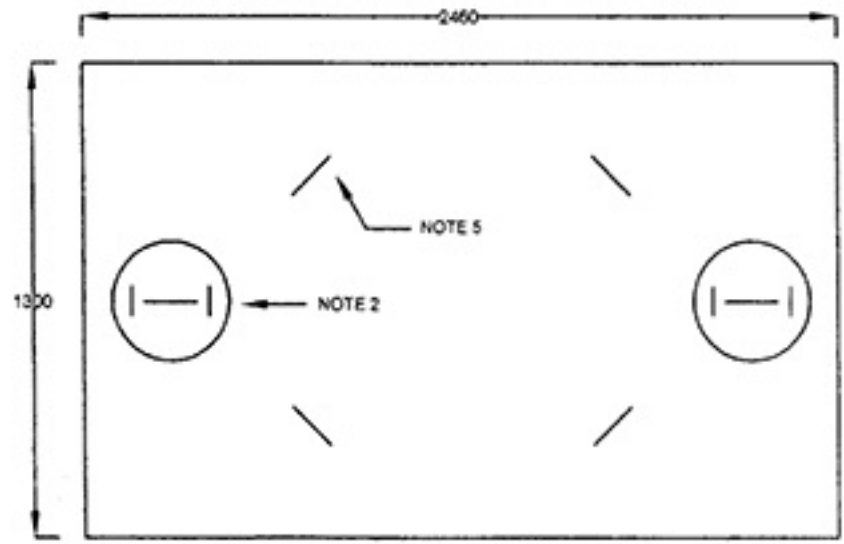
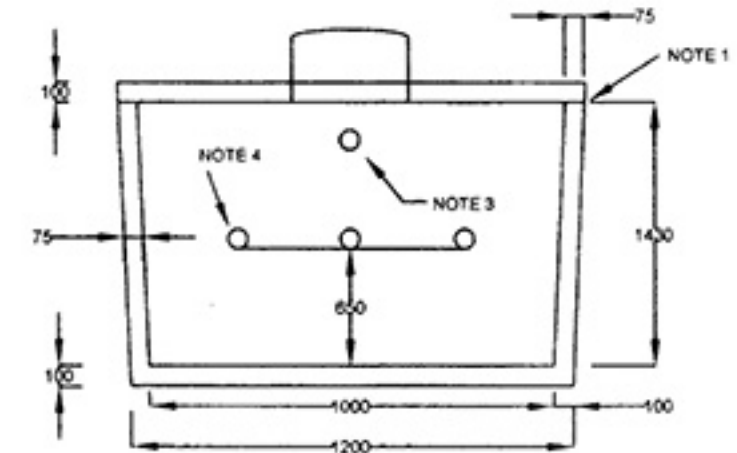
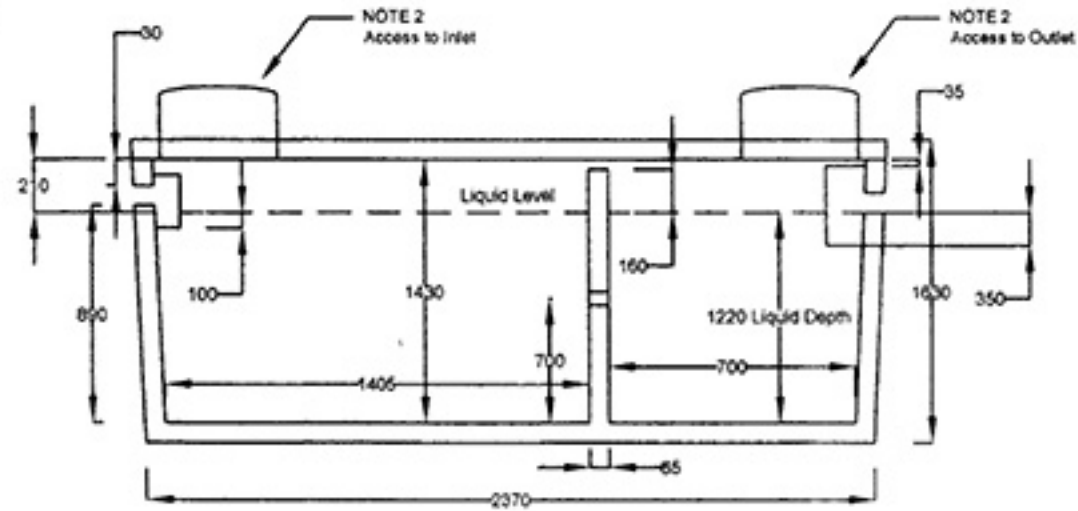
1. Joint between the tank and the lid is sealed with a mastic seal by the manufacturer.
2. Standard opening is a 600mm DIA cast in place polylok (plastic) riser & lid.
3. 100mm diam. pipe cast in top of lid for venting and capped with plastic grate.
4. Four heavy lifting handles are cast in the lids with 12mm rebar.
5. Tank is manufactured using 32 MPa concrete with 5 to 8% Air Entrainment and reinforced with 10mm rebar on 300mm x 300mm centers.
6. Inlet and outlet openings are fit with a cast in place Polylok pipe seal which will accept 3" or 4" PVC. Baffle is of heavy plastic construction and installed by the manufacturer with zinc plated mushroom nails.



**ORANGEVILLE  
PRE-CAST  
CONCRETE LTD.**

**PRECAST SEPTIC TANK - TWO COMPARTMENT**  
MODEL #: 600ST      3, 000 LITRE (600 GALLON) - 3, 300 KG

R.R. #4, ORANGEVILLE, ONTARIO L9W 2Z1 (519)941-4050 Fax: (519)941-8028



All measurements in mm

**Notes: Working Capacity 3000 Litres**

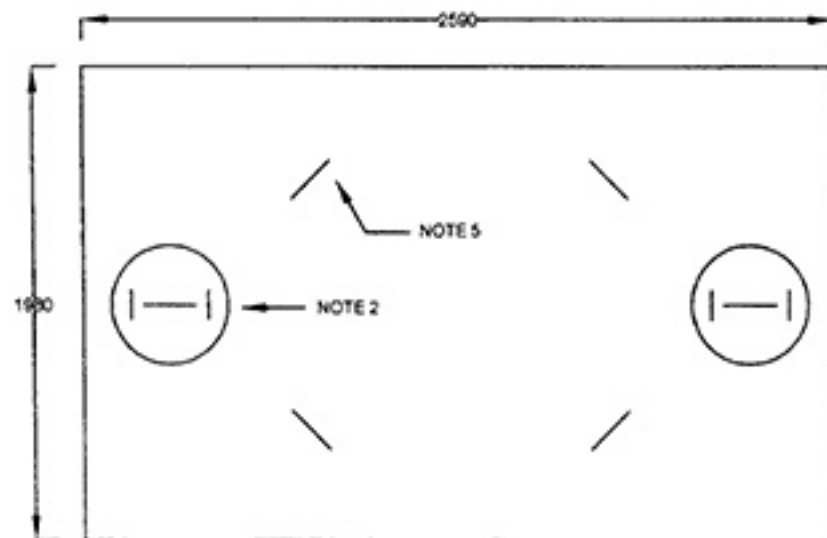
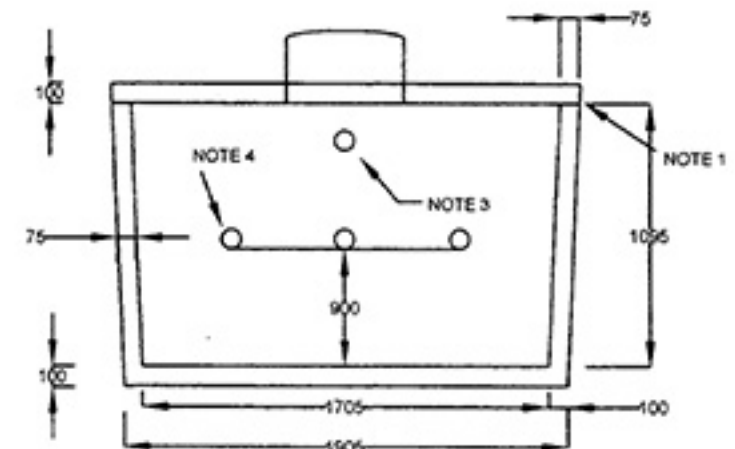
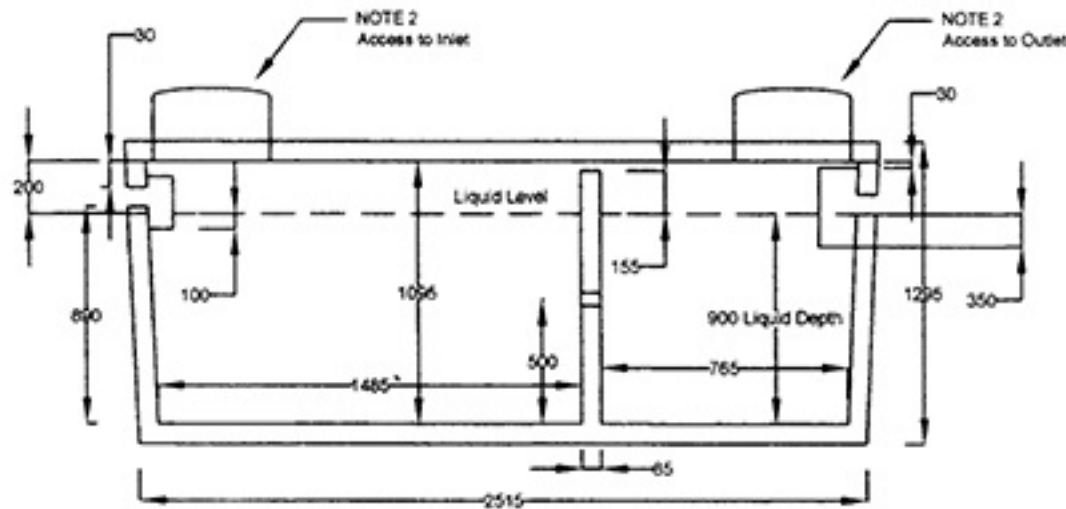
1. Joint between the tank and the lid or between the two halves is sealed with a mastic seal by the manufacturer.
2. Standard opening is a 600mm DIA cast in place polylok (plastic) riser.
3. Inlet and outlet openings are fit with a cast in place Polylok pipe seal which will accept 3" or 4" PVC. Baffle is of heavy plastic construction and installed by the manufacturer with zinc plated mushroom nails.
4. 3-100mm diameter partition flow throughs are evenly spaced across the partition.
5. Four heavy lifting handles are cast in the lids.
6. Maximum depth of burial is 1m.
7. Tank is manufactured using 32 MPa concrete with 5 to 8% Air Entrainment and reinforced with 10mm rebar on 300mm x 300mm centers.



**ORANGEVILLE  
PRE-CAST  
CONCRETE LTD.**

**LOWBED SEPTIC TANK - TWO COMPARTMENT**  
MODEL #: 800LB 3, 600 LITRE (800 GALLON) - 4, 200 KG

R.R. #4, ORANGEVILLE, ONTARIO L9W 2Z1 (519)941-4050 Fax: (519)941-8028



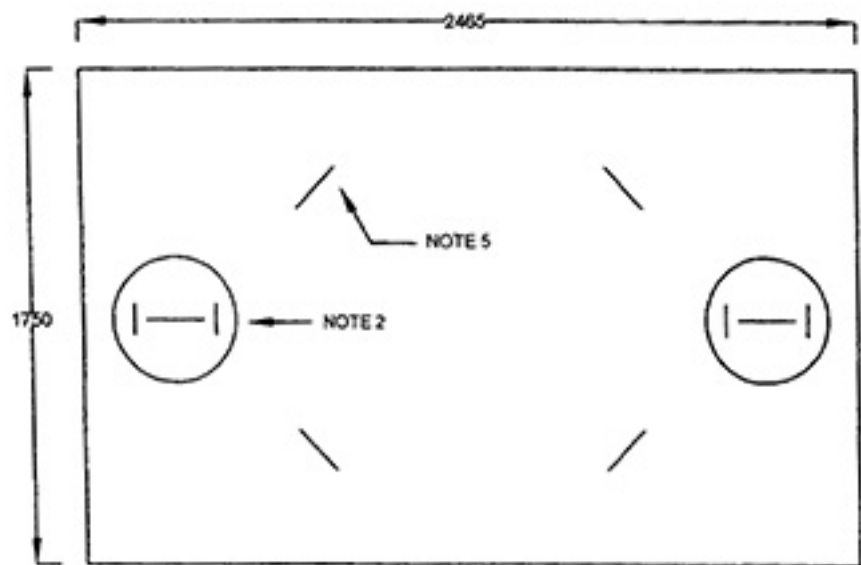
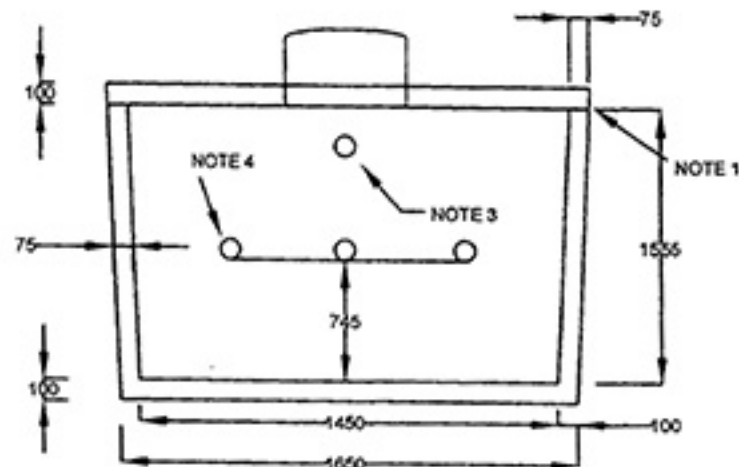
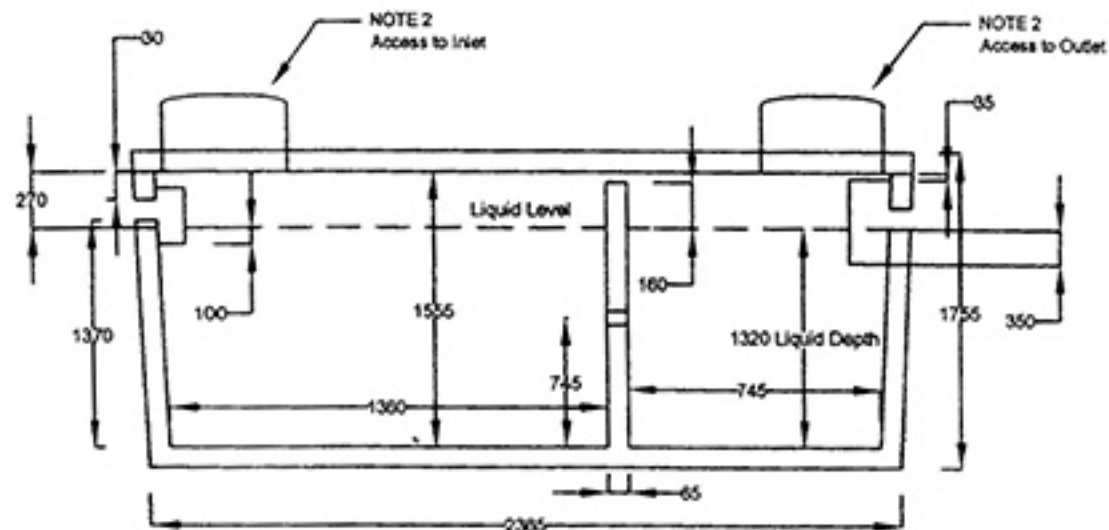
All measurements in mm

Notes: **Working Capacity 3600 Litres**

1. Joint between the tank and the lid or between the two halves is sealed with mastic seal by the manufacturer.
2. Standard opening is a 600mm DIA cast in place polylok (plastic) riser.
3. Inlet and outlet openings are fit with a cast in place Polylok pipe seal which will accept 3" or 4" PVC. Baffle is of heavy plastic construction and installed by the manufacturer with zinc plated mushroom nails.
4. 3-100mm diameter partition flow throughs are evenly spaced across the partition.
5. Four heavy lifting handles are cast in the lids.
6. Maximum depth of burial is 1m.
7. Tank is manufactured using 32 MPa concrete with 5 to 8% Air Entrainment and reinforced with 10mm rebar on 300mm x 300mm centers.



R.R. #4, ORANGEVILLE, ONTARIO L9W 2Z1 (519)941-4050 Fax: (519)941-8028



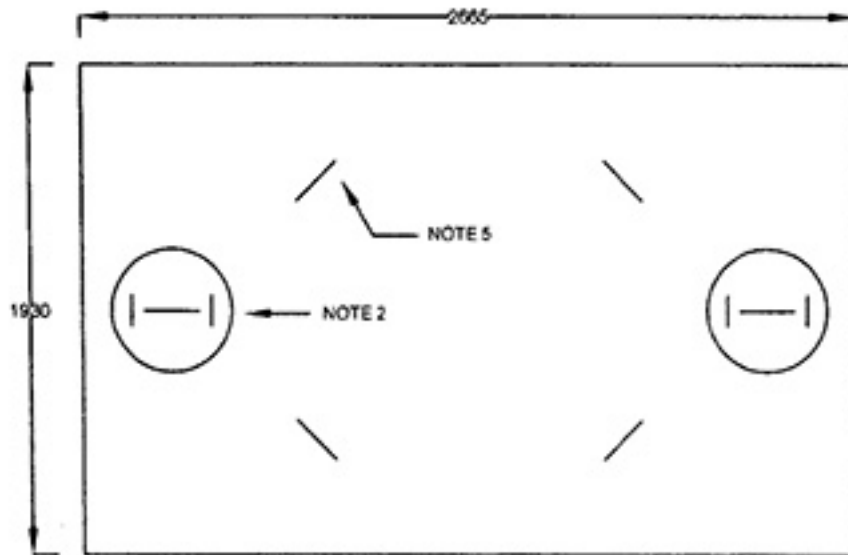
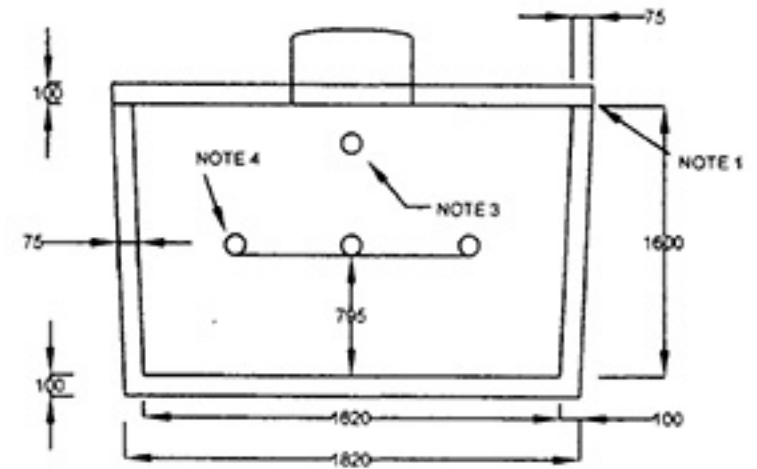
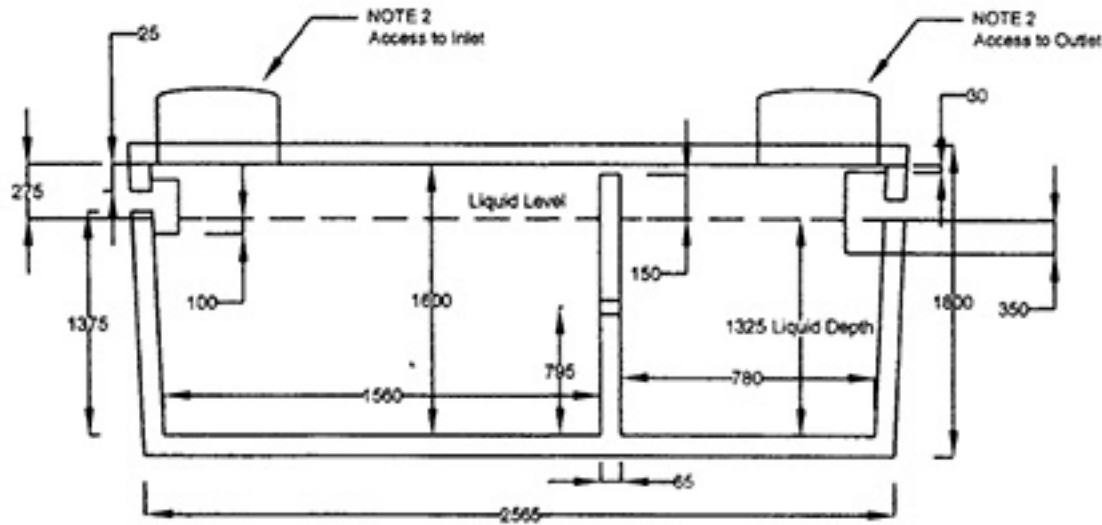
All measurements in mm

Notes:

Working Capacity 4750 Litres

1. Joint between the tank and the lid or between the two halves is sealed with mastic seal by the manufacturer.
2. Standard opening is a 600mm DIA cast in place polylok (plastic) riser.
3. Inlet and outlet openings are fit with a cast in place Polylok pipe seal which will accept 3" or 4" PVC. Baffle is of heavy plastic construction and installed by the manufacturer with zinc plated mushroom nails.
4. 3-100mm diameter partition flow throughs are evenly spaced across the partition.
5. Four heavy lifting handles are cast in the lids.
6. Maximum depth of burial is 1m.
7. Tank is manufactured using 32 MPa concrete with 5 to 8% Air Entrainment and reinforced with 10mm rebar on 300mm x 300mm centers.

R.R. #4, ORANGEVILLE, ONTARIO L9W 2Z1 (519)941-4050 Fax: (519)941-8028



All measurements in mm

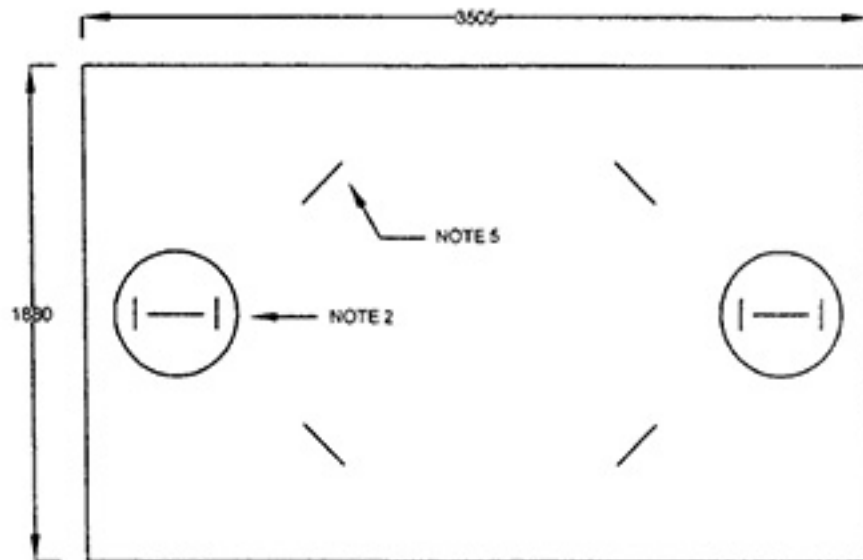
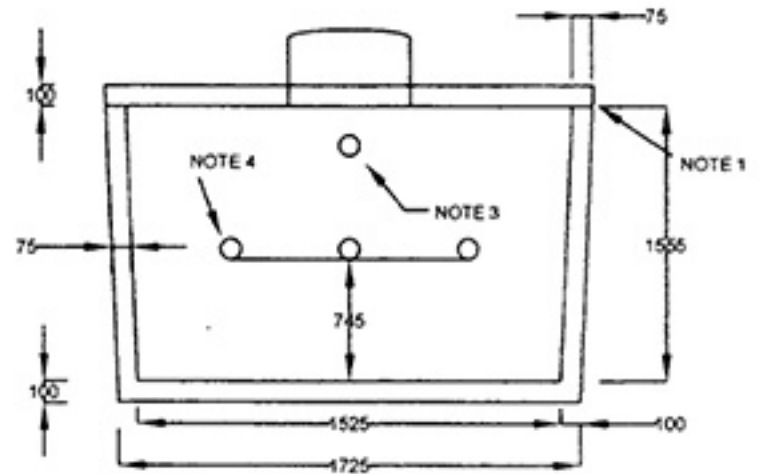
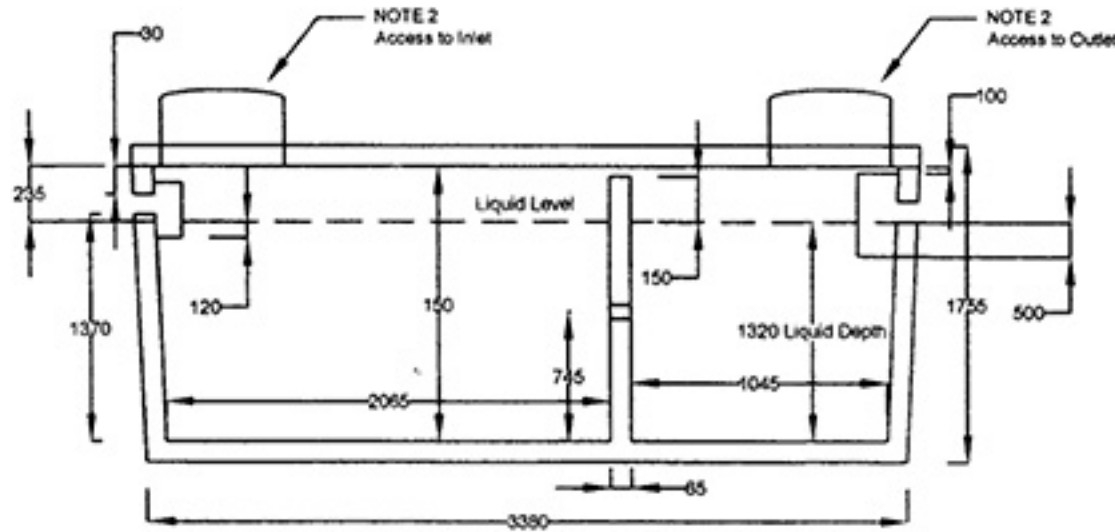
Notes:

Working Capacity 5400 Litres

1. Joint between the tank and the lid or between the two halves is sealed with mastic seal by the manufacturer.
2. Standard opening is a 600mm DIA cast in place polylok (plastic) riser & lid screwed down with gasket seal.
3. Inlet and outlet openings are fit with a cast in place Polylok pipe seal which will accept 3" or 4" PVC. Baffle is of heavy plastic construction and installed by the manufacturer with zinc plated mushroom nails.
4. 3-100mm diameter partition flow throughs are evenly spaced across the partition.
5. Four heavy lifting handles are cast in the lids with 12 mm rebar
6. Maximum depth of burial is 1m.
7. Tank is manufactured using 32 MPa concrete with 5 to 8% Air Entrainment and reinforced with 10mm rebar on 300mm x 300mm centers.



R.R. #4, ORANGEVILLE, ONTARIO L9W 2Z1 (519)941-4050 Fax: (519)941-8028



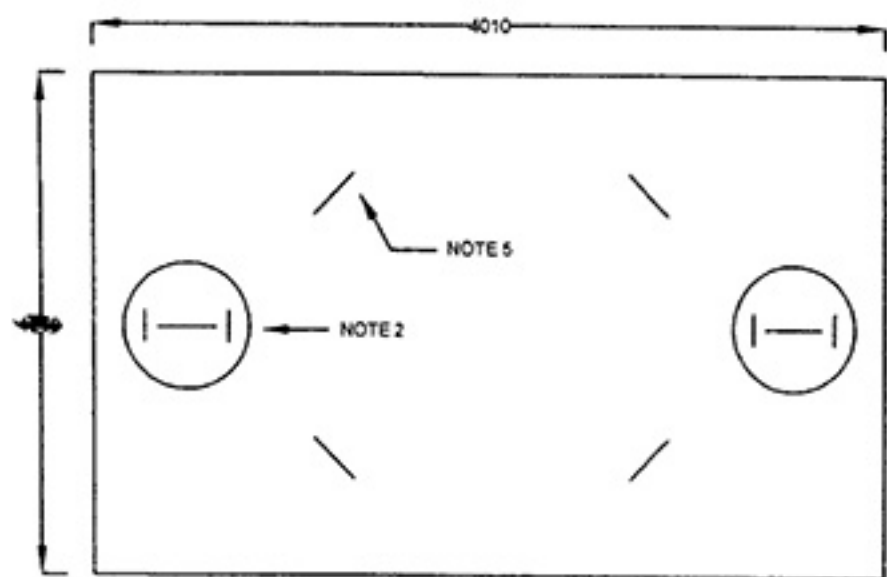
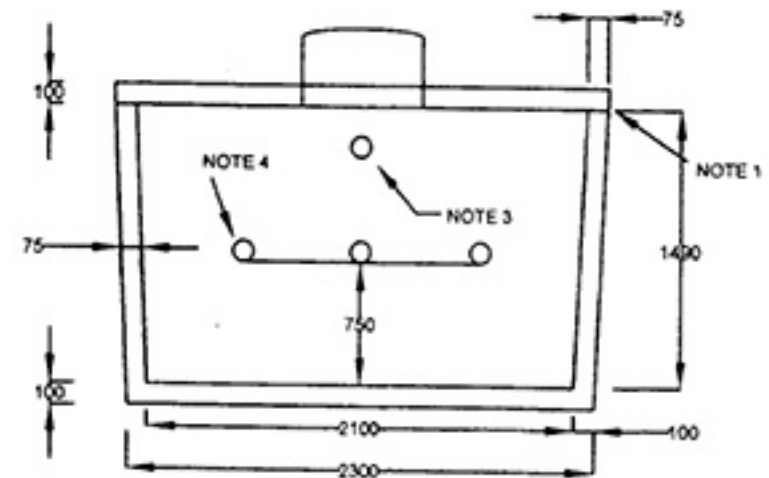
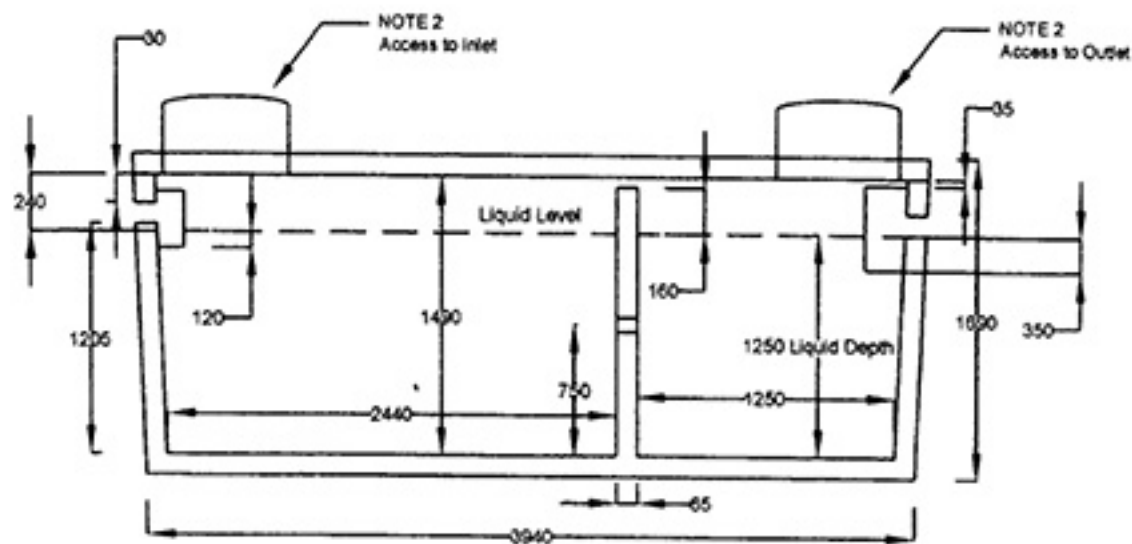
All measurements in mm

Notes: **Working Capacity 7480 Litres**

1. Joint between the tank and the lid or between the two halves is sealed with mastic seal by the manufacturer.
2. Standard opening is a 600mm DIA cast in place polylok (plastic) riser.
3. Inlet and outlet openings are fit with a cast in place Polylok pipe seal which will accept 3" or 4" PVC. Baffle is of heavy plastic construction and installed by the manufacturer with zinc plated mushroom nails.
4. 3-100mm diameter partition flow throughs are evenly spaced across the partition.
5. Four heavy lifting handles are cast in the lids.
6. Maximum depth of burial is 1m.
7. Tank is manufactured using 32 MPa concrete with 5 to 8% Air Entrainment and reinforced with 10mm rebar on 300mm x 300mm centers.



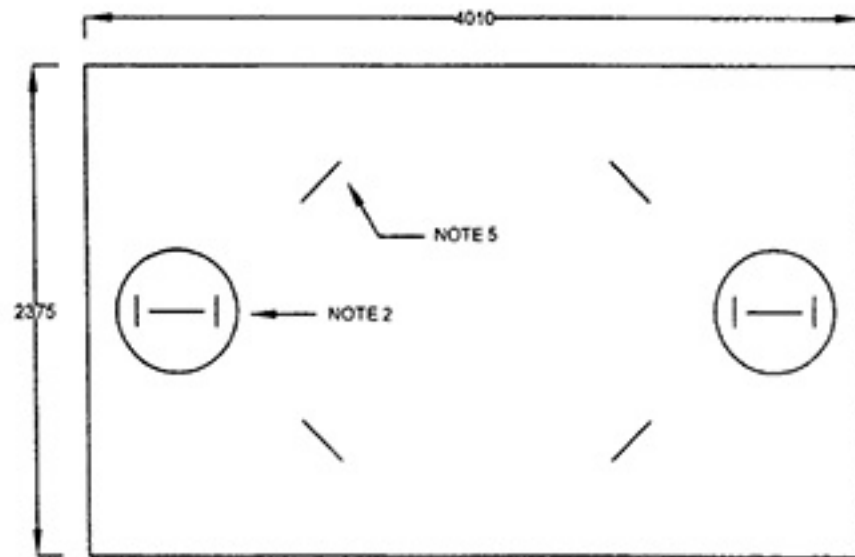
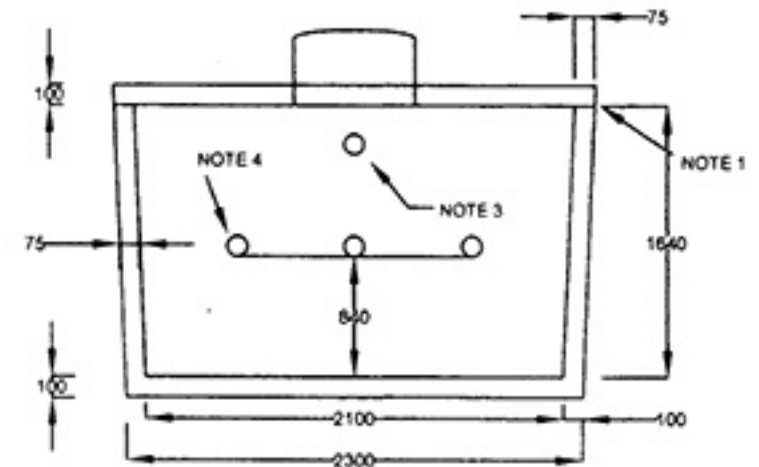
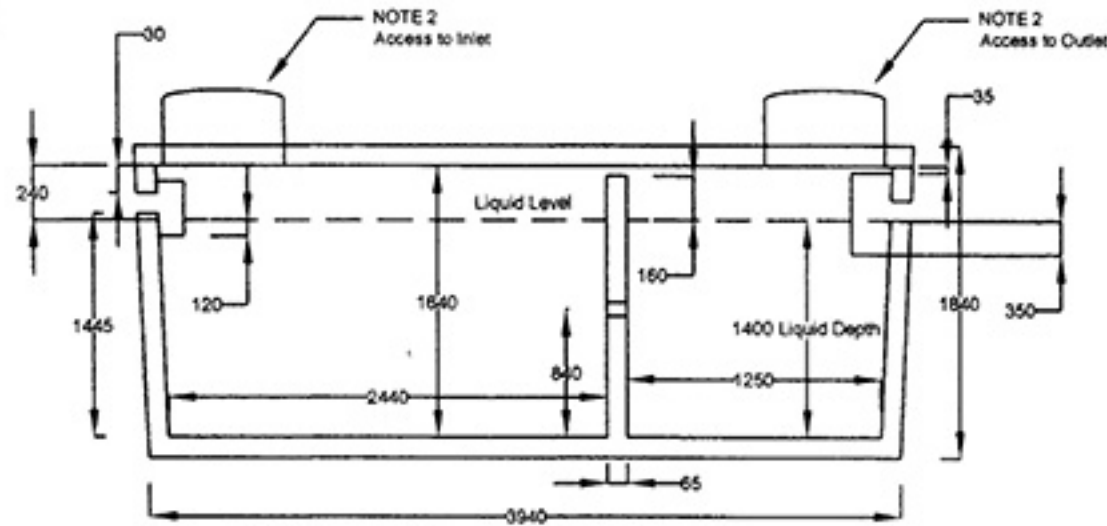
R.R. #4, ORANGEVILLE, ONTARIO L9W 2Z1 (519)941-4050 Fax: (519)941-8028



All measurements in mm

- Notes: **Working Capacity 9000 Litres**
1. Joint between the tank and the lid or between the two halves is sealed with a mastic seal by the manufacturer.
  2. Standard opening is a 600mm DIA cast in place polylok (plastic) riser.
  3. Inlet and outlet openings are fit with a cast in place Polylok pipe seal which will accept 3" or 4" PVC. Baffle is of heavy plastic construction and installed by the manufacturer with zinc plated mushroom nails.
  4. 3-100mm diameter partition flow throughs are evenly spaced across the partition.
  5. Four heavy lifting handles are cast in the lids.
  6. Maximum depth of burial is 1m.
  7. Tank is manufactured using 32 MPa concrete with 5 to 8% Air Entrainment and reinforced with 10mm rebar on 300mm x 300mm centers.

R.R. #4, ORANGEVILLE, ONTARIO L9W 2Z1 (519)941-4050 Fax: (519)941-8028



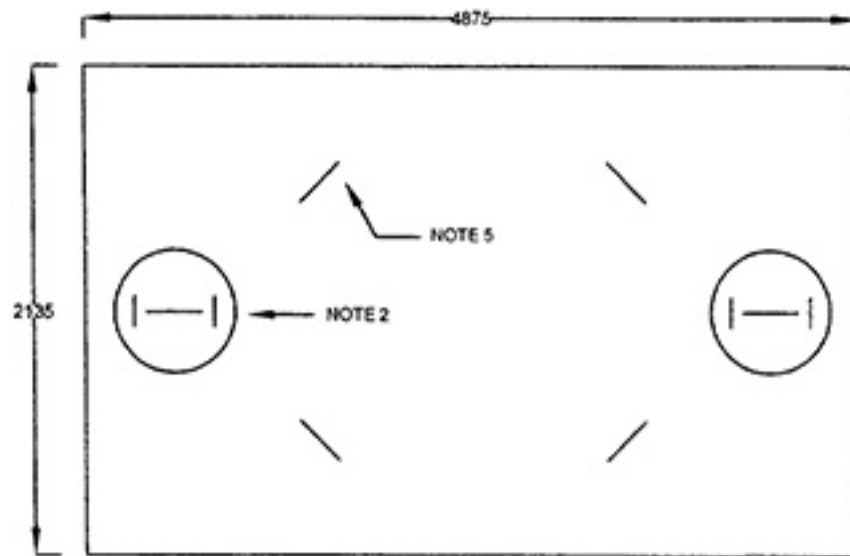
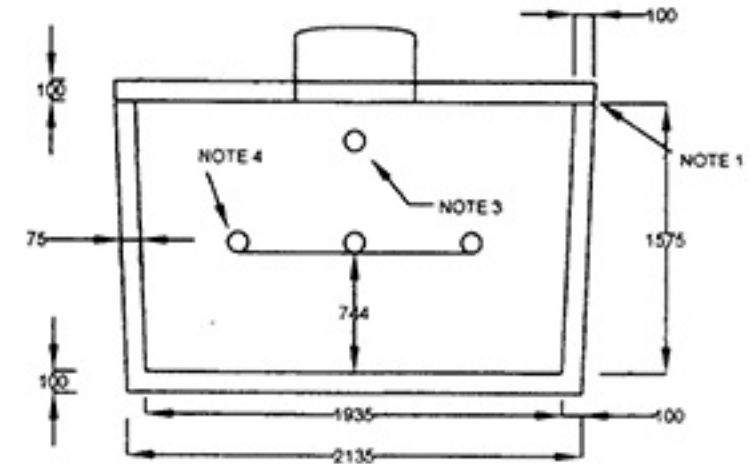
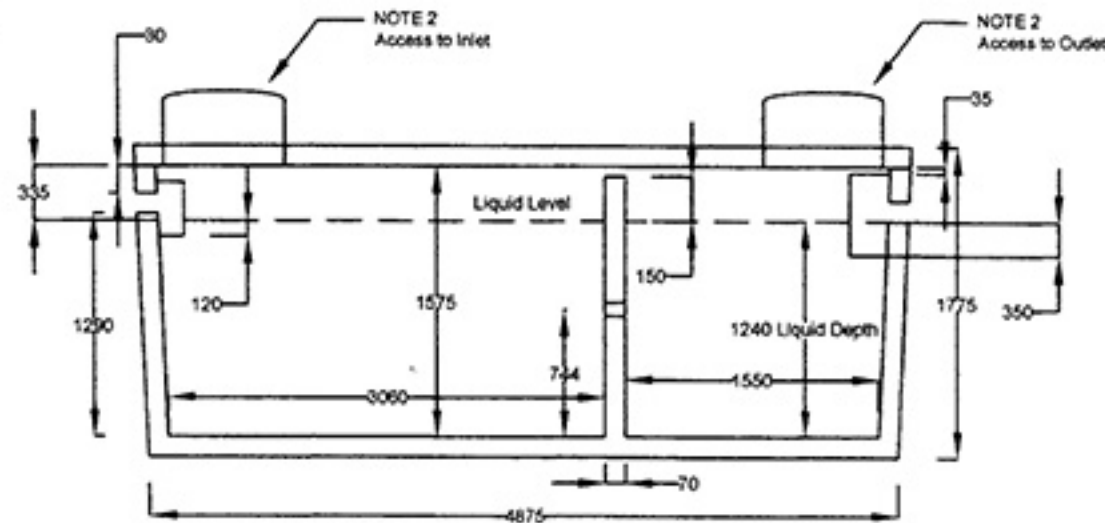
All measurements in mm

Notes: Working Capacity 10 000 Litres

1. Joint between the tank and the lid or between the two halves is sealed with mastic seal by the manufacturer.
2. Standard opening is a 600mm DIA cast in place polylok (plastic) riser.
3. Inlet and outlet openings are fit with a cast in place Polylok pipe seal which will accept 3" or 4" PVC. Baffle is of heavy plastic construction and installed by the manufacturer with zinc plated mushroom nails.
4. 3-100mm diameter partition flow throughs are evenly spaced across the partition.
5. Four heavy lifting handles are cast in the lids.
6. Maximum depth of burial is 1m.
7. Tank is manufactured using 32 MPa concrete with 5 to 8% Air Entrainment and reinforced with 10mm rebar on 300mm x 300mm centers.



R.R. #4, ORANGEVILLE, ONTARIO L9W 2Z1 (519)941-4050 Fax: (519)941-8028

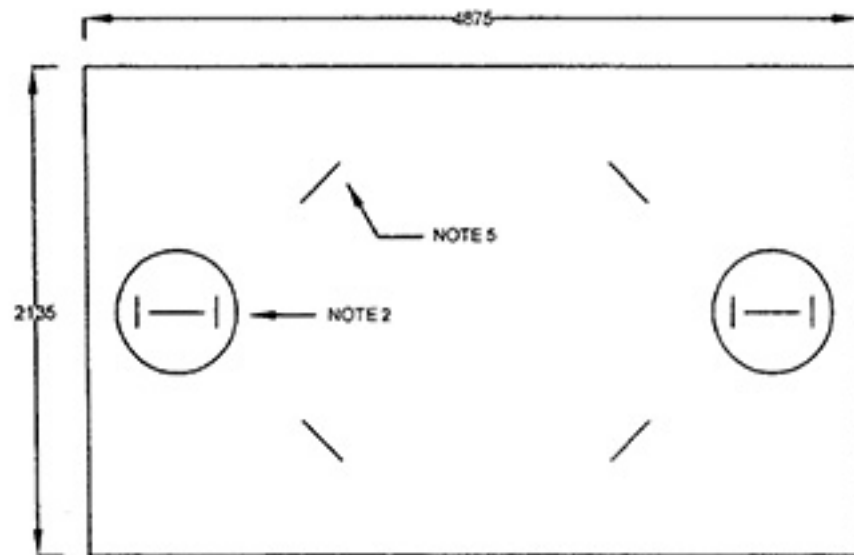
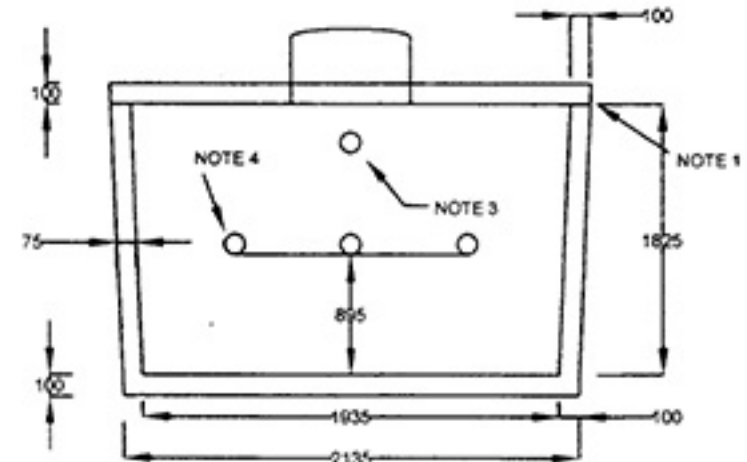
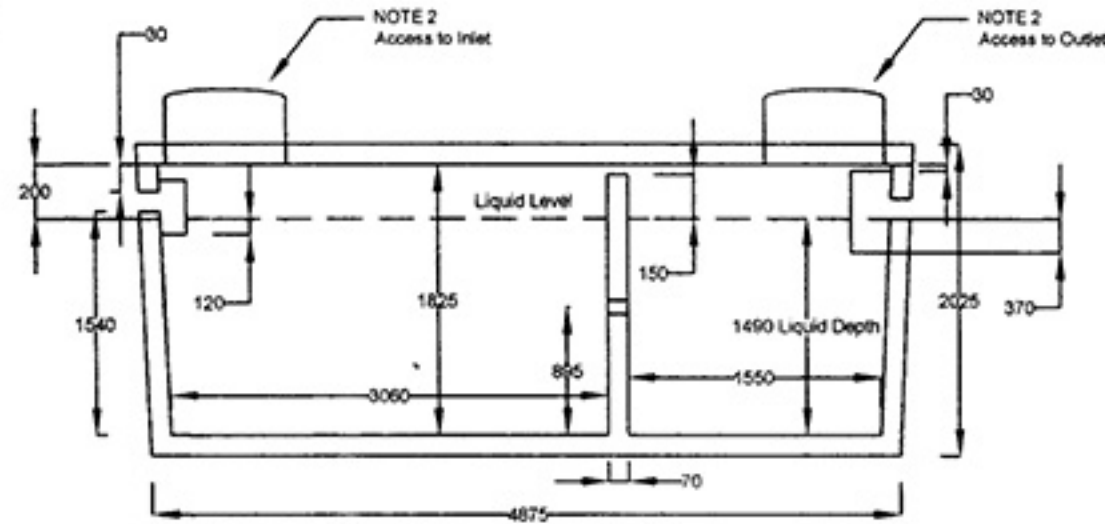


All measurements in mm

Notes: Working Capacity 11 250 Litres

1. Joint between the tank and the lid or between the two halves is sealed with mastic seal by the manufacturer.
2. Standard opening is a 600mm DIA cast in place polylok (plastic) riser.
3. Inlet and outlet openings are fit with a cast in place Polylok pipe seal which will accept 3" or 4" PVC. Baffle is of heavy plastic construction and installed by the manufacturer with zinc plated mushroom nails.
4. 3-100mm diameter partition flow throughs are evenly spaced across the partition.
5. Four heavy lifting handles are cast in the lids.
6. Maximum depth of burial is 1m.
7. Tank is manufactured using 32 MPa concrete with 5 to 8% Air Entrainment and reinforced with 10mm rebar on 300mm x 300mm centers.

R.R. #4, ORANGEVILLE, ONTARIO L9W 2Z1 (519)941-4050 Fax: (519)941-8028



All measurements in mm

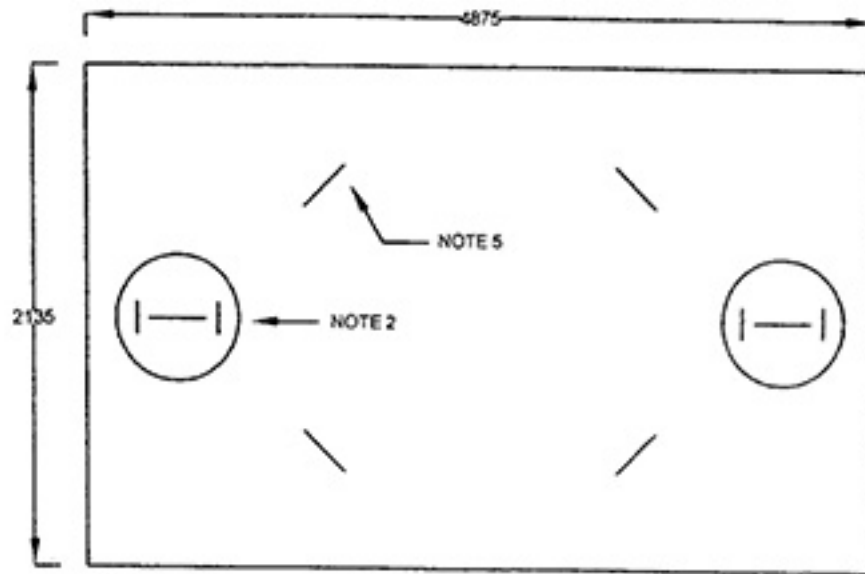
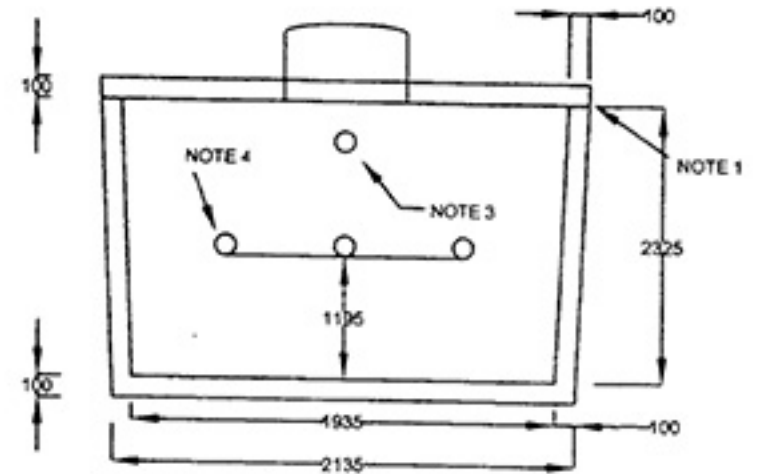
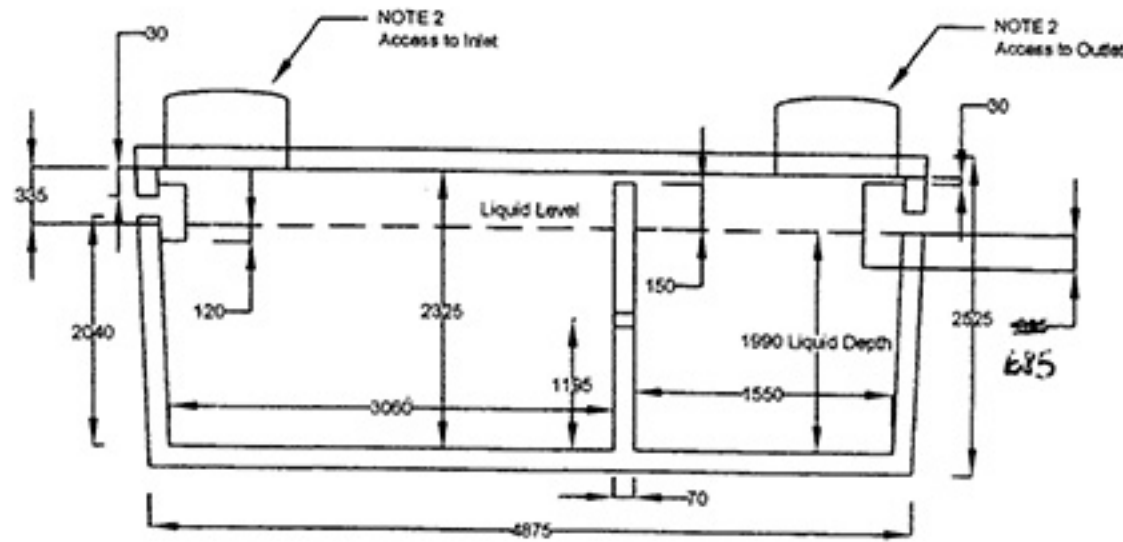
Working Capacity 13 500 Litres

Notes:

1. Joint between the tank and the lid or between the two halves is sealed with mastic seal by the manufacturer.
2. Standard opening is a 600mm DIA cast in place polylok (plastic) riser.
3. Inlet and outlet openings are fit with a cast in place Polylok pipe seal which will accept 3" or 4" PVC. Baffle is of heavy plastic construction and installed by the manufacturer with zinc plated mushroom nails.
4. 3-100mm diameter partition flow throughs are evenly spaced across the partition.
5. Four heavy lifting handles are cast in the lids.
6. Maximum depth of burial is 1m.
7. Tank is manufactured using 32 MPa concrete with 5 to 8% Air Entrainment and reinforced with 10mm rebar on 300mm x 300mm centers.



R.R. #4, ORANGEVILLE, ONTARIO L9W 2Z1 (519)941-4050 Fax: (519)941-8028



All measurements in mm

Notes:

Working Capacity 18 000 Litres

1. Joint between the tank and the lid or between the two halves is sealed with mastic seal by the manufacturer.
2. Standard opening is a 600mm DIA cast in place polylok (plastic) riser.
3. Inlet and outlet openings are fit with a cast in place Polylok pipe seal which will accept 3" or 4" PVC. Baffle is of heavy plastic construction and installed by the manufacturer with zinc plated mushroom nails.
4. 3-100mm diameter partition flow throughs are evenly spaced across the partition.
5. Four heavy lifting handles are cast in the lids.
6. Maximum depth of burial is 1m.
7. Tank is manufactured using 32 MPa concrete with 5 to 8% Air Entrainment and reinforced with 10mm rebar on 300mm x 300mm centers.

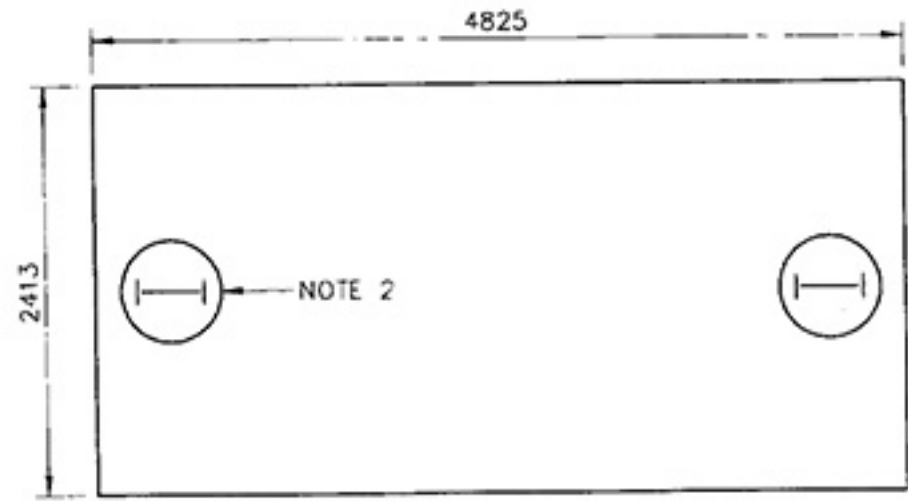
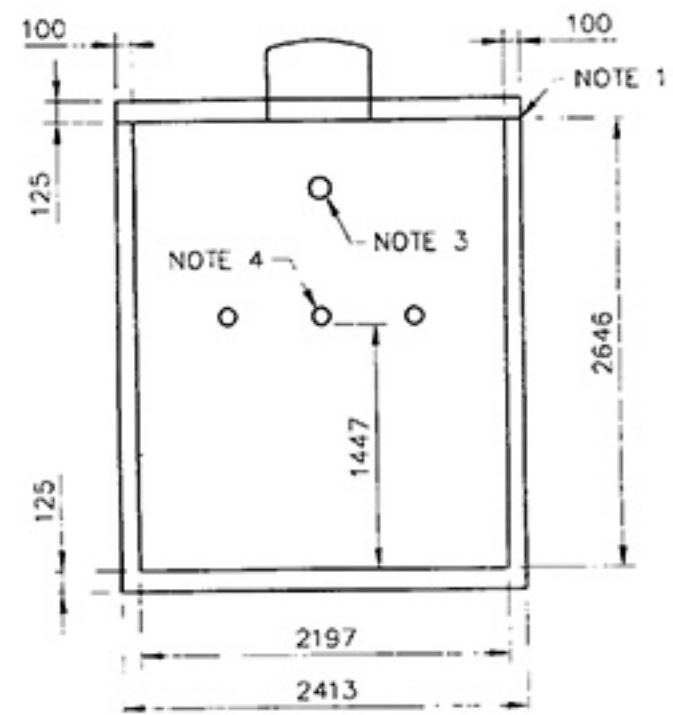
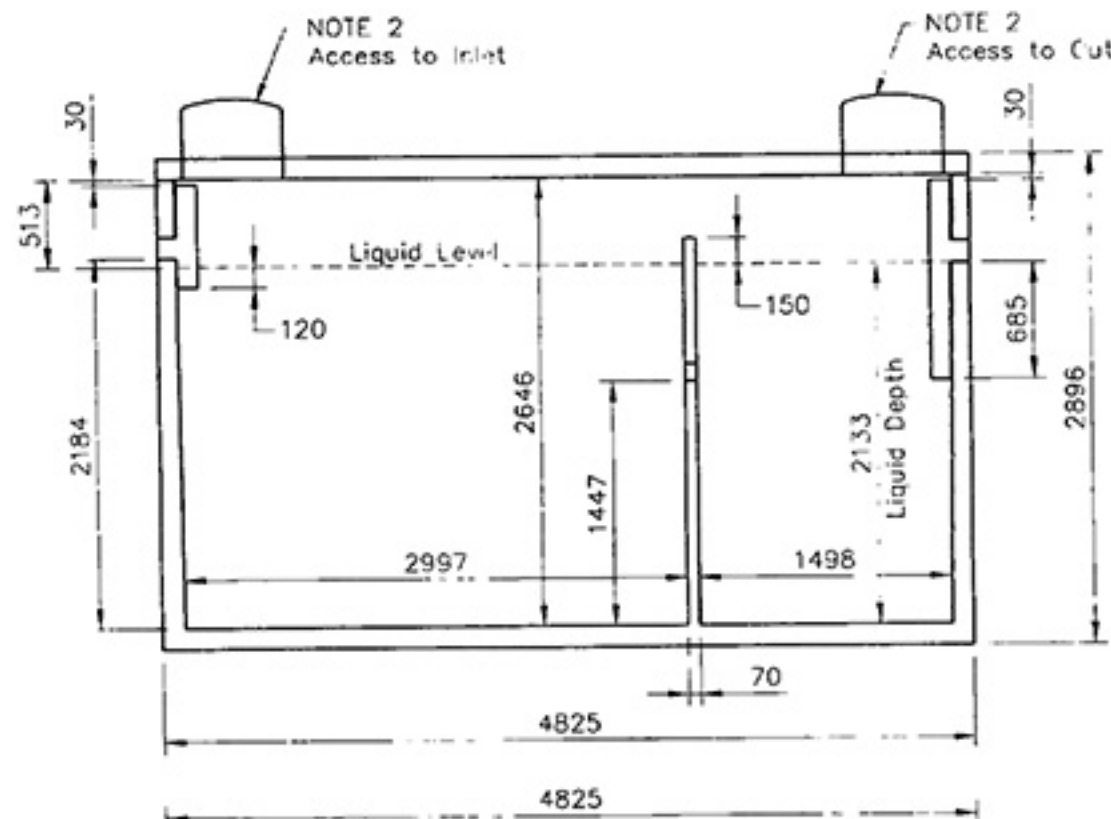


**ORANGEVILLE  
PRE-CAST  
CONCRETE LTD.**

**PRECAST SEPTIC TANK-TWO COMPARTMENT**

MODEL # 5000ST 22,980 LITRE (5,000 GALLON)-16,400 KG

R.R. #4, ORANGEVILLE, ONTARIO L9W 2Z1 (519)941-4050 FAX: (519)941-8028



All measurements in mm

Working Capacity 22,980 Litres

**Notes:**

1. Joint between the tank and the lid or between the two halves is sealed with a mastic seal by the manufacturer.
2. Standard opening is a 600mm DIA. cast in place Polylok (plastic) riser.
3. Inlet opening is fit with a cast in place Polylok pipe seal which will accept 75mm or 100mm PVC. Baffle is of heavy plastic construction and installed with zinc plated mushroom nails.
4. 3-100mm diameter partition flow throughs are evenly spaced across the partition.
5. Outlet includes a Polylok 525 filter with a 100mm diameter outlet.
6. Maximum depth of burial is 1m.
7. Tank is manufactured using 32 MPa concrete with 5% to 8% air entrainment and reinforced with 10mm rebar on 300mm x 300mm centers.